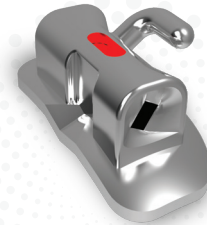




Zero Corrector™



Synergy® Brackets

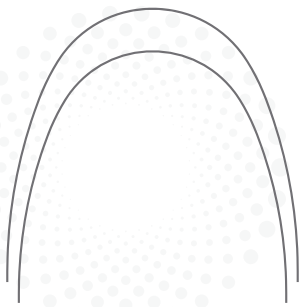


FLI® Tubes

# RMO®

## The Synergy®

# Ko-NCEPT™ System



Synergy® Class Wire



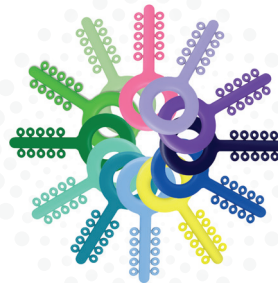
EnergyPak™  
Latex Elastics



Buttons & Hooks



Energy Chain™



Key-Ties™

## The Synergy™ Ko-NCEPT™

The Ko-NCEPT is an innovative model created to elevate the orthodontic experience by simplifying every step of the treatment journey. It replaces traditional, time-consuming processes with a streamlined, technology-driven approach that significantly reduces chair time and overall treatment duration.

By integrating intelligent digital tools and more efficient clinical protocols, Ko-NCEPT delivers a smoother workflow and a more comfortable, engaging, and patient-focused experience.

**Dr. Peri Colino Ph.D**

# The Synergy™ Ko-NCEPT™ System

## Zero Corrector™ Class II & Class III Corrector

### Individual - 1 Piece

Size (mm)	UL/LR	UR/LL
18	Z01118	Z01218
20	Z01120	Z01220
23	Z01123	Z01223
25	Z01125	Z01225
27	Z01127	Z01227
29	Z01129	Z01229

### Patient Sets - 2 Piece

Size (mm)	UL/LR, UR/LL
18	Z02018
20	Z02020
23	Z02023
25	Z02025
27	Z02027
29	Z02029

### Intro Kit - 6 Sets

1 set of each size KZ1000  
 Contains 1 set each: 18mm, 20mm, 23mm, 25mm, 27mm, 29mm



## Zero Corrector™ Selection Guide (10 Pack)

Size (mm)	Description	UL/LR, UR/LL
16 - 31	Pack of 10	J00620



## FLI Tubes

Molar	.022					
	Torque	Offset	Max Right	Max Left	Mand Right	Mand Left
1st Molar	0°	0°	A08774	A08775	A08782	A08783
2nd Molar	0°	0°	A08776	A08777	A08784	A08785



## Synergy Brackets Kits

Synergy® hook on cuspid/bicuspid, 5-5 Oriented Kit	.022 KM03611S
--	------------------



## Synergy Brackets Maxillary (10 Pack)

Tooth	Torque	Angulation	Offset	.022	
				Right	Left
Central	17°	3°		M03600	M03601
Lateral	8°	9°		M03602	M03603
Cuspid	0°	8°		M03606	M03607
1st/2nd Bicuspid	-7°	0°	2° DO	M03610	M03611



## Synergy Brackets Mandibular (10 Pack)

Tooth	Torque	Angulation	Offset	.022	
				Right	Left
Central/Lateral	0°	0°		M03620	
Cuspid	0°	0°		M03626	
1st/2nd Bicuspid	-17°	0°	4° DO	M03630	M03631



# The Synergy™ Ko-NCEPT™ System

## Wire Sequence

### SYNERGY CLASS ARCHWIRE (NATURAL FORM)

Wire Size	Upper	Lower	
.012	W11AU012	W11AL012	XPress™ SE SuperElastic Nickel Titanium
.016	W12AU016	W12AL016	TRANSFORM™ HA Heat Activated
.020 x .020	W12AU2020	W12AL2020	TRANSFORM™ HA Heat Activated
.019 x .025	W30AU1925	W30AL1925	Bendaloy® Beta Titanium
.019 x .025	W28AU1925	W28AL1925	Tru-Chrome® FLEX-VIII™ Stainless Steel Twisted Wire



## EnergyPak™ Elastics (50 Patient Packs Per Carton)

Size (Inside Diameter)	Force	REF Number
3/16"	10 oz.	J01600
3/16"	8 oz.	J01601
1/4"	6 oz.	J01602



## Bondable Attachments

Description	(10 pack)	REF Number
Direct Bond Button Round Ceramic		A00321
Stainless Steel bondable Button Round Mini Curved		A07916
Stainless Steel Bondable Button Rectangle Curved		A07918
Traction Hook Round		A00316
Stainless Steel Perforated Bondable Button Round Mini Curved		A00319
Direct Bond Hook, Round Stainless Steel		A00320
Direct Bond Hook, Round Ceramic		A00322



## 5X Model Zero Corrector for Patient Consultation

Description (1 pack)	REF Number
7 1/16" (179.4 mm) x 1 7/16" (36.5 mm)	P00050

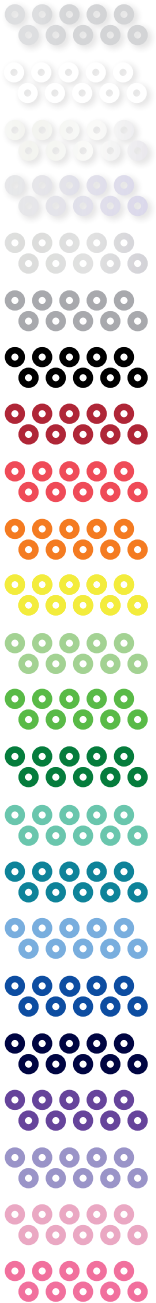
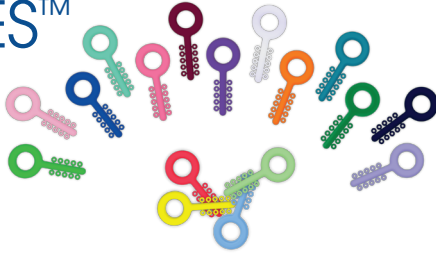
## Zero Corrector Patient Presentation Typodont

Description	REF Number
Typodont Zero Corrector	P00031



# The Synergy™ Ko-NCEPT™ System

## ELASTOMERIC LIGATURES KEY-TIES™



Color	Key-Ties™
Clear	J10336
White	J10351
Pearl Ivory	J10344
Pearl Blue	J10345
Silver	J10348
Gray	J10337
Black	J10331
Burgundy	J10335
Red	J10346
Orange	J10343
Yellow	J10352
Light Green	J10340
Bright Green	J10333
Green	J10338
Aqua Green	J10330
Teal	J10350
Sky Blue	J10349
Blue	J10332
Navy	J10342
Purple	J10347
Lavender	J10339
Pink	J10341
Bright Pink	J10334

## RMO'S EXCLUSIVE Energy Chain™



Ring Size **Small**  
Space Between Rings **Closed**  
Space Between Centers **2.8 mm**

### 2.3m Spools

	Clear	J00120
	Gray	J00166
	Blue	J00223
	Dark Green	J00227
	Rose	J00231
	Purple	J00235
	Teal	J00136
	Pearl Blue	J00139
	Orange	J00239
	Red	J00261
	Black	J00263
	Light Pink	J00265
	Yellow	J00267
	Pearl Ivory	J00142
	Pink	J00145

### 4.7m Spools

	Clear	J00293
	Gray	J00294

Ko-NCEPT is a trademark of Koline Institute. Bendaloy, FLI, Synergy, and Tru-Chrome are registered trademarks and Energy Chain, Key-Ties, XPress, TRANSFORM and Zero Corrector are trademarks of OrthoAmerica Holdings, LLC. © 2025 OrthoAmerica Holdings, LLC.

M0126058 REV. B



RMOOrtho.com  
CustomerService@RMOOrtho.com  
2165 Earlywood Dr. | Franklin, IN 46131

Toll Free: 800.525.6375  
Int'l: 303.592.8200

Scan here to order your favorite RMO® products!  
Order at [RMOOrtho.com](https://www.RMOOrtho.com)

